

HSK – KOMBISHELL Prihvati

POWER MILLING CHUCK

COLLET & SPANNER

K / CK / MT / SP

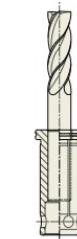
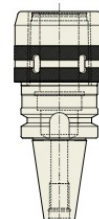


■ END MILL COLLET (K TYPE)	
MODEL No.	SET
K20-6	
K20-8	
K20-10	5pcs
K20-12	
K20-16	
K25-6	
K25-8	
K25-10	6pcs
K25-12	
K25-16	
K25-20	
K32-6	
K32-8	
K32-10	
K32-12	7pcs
K32-16	
K32-20	
K32-25	
K42-6	
K42-8	
K42-10	
K42-12	8pcs
K42-16	
K42-20	
K42-25	
K42-32	

■ END MILL COLLET (CK TYPE)	
MODEL No.	SET
CK20-6	
CK20-8	
CK20-10	5pcs
CK20-12	
CK20-16	
CK25-6	
CK25-8	
CK25-10	6pcs
CK25-12	
CK25-16	
CK25-20	
CK32-6	
CK32-8	
CK32-10	
CK32-12	7pcs
CK32-16	
CK32-20	
CK32-25	
CK42-6	
CK42-8	
CK42-10	
CK42-12	8pcs
CK42-16	
CK42-20	
CK42-25	
CK42-32	

■ MT COLLET	
MODEL No.	EDP No.
K20-MT1	P2506519
K20-MT2	P2506520
K25-MT1	P2506521
K25-MT2	P2506522
K25-MT3	P2506524
K32-MT1	P2506523
K32-MT2	P2506524
K32-MT3	P2506525
K42-MT1	P2506526
K42-MT2	P2506527
K42-MT3	P2506528
K42-MT4	P2506529

■ DRILL CHUCK ARBOR	
MODEL No.	EDP No.
K20-JTA6	P2506530
K25-JTA6	P2506531
K42-JTA6	P2506532
K42-JTA6	P2506533



■ SPANNER	
MODEL No.	EDP No.
C20 SP	P2773401
C25 SP	P2773402
C32 SP	P2600033
C42 SP	P2773403



YG-1 TOOLING SYSTEM

MORSE TAPER ARBOR

- EINSATZHÜLSEN FÜR MORSEKEGEL
- DOUILLES DE RÉDUCTION CÔNE MORSE
- MANDRINO RIDUZIONE CONO MORSE
- REDUCTORES A MORSE

DIN 69871-SK

DIN 69893/ISO 12164-1-HSK

JIS B6339/MAS 403-BT

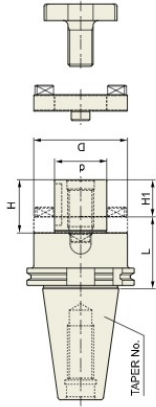
ANSI B5.18-NT

GOST 25827-93

SHELL MILL ARBOR

COMBI-SHELL MILL ARBOR

KOMBI-AUFNAHMEFORM FÜR FRÄSER MIT BOHRUNG
MANDRIN PORTÉ-FRAISES COMBINÉS
MANDRINO PORTA FRESE
PORTA FRESAS COMBINADO



DIN 69871-SK

Taper Accuracy: AT3

G Value: 6.3

RPM: 15,000

Coolant System: A

■ DIN 69871-SK

◆ STANDARD

TAPER No.	MODEL No.	EDP No.	d	L	D	H1	H	Part No.	WEIGHT (kg)	Unit: mm
30	SK50-CMA16-50	P2524001	16	50	32	17	27	27, 33, 39		Unit: mm
	SK50-CMA22-50	P2524002	22	50	40	19	31	28, 34, 40		
	SK50-CMA27-55	P2524003	27	55	48	21	33	29, 35, 41		
40	SK60-CMA16-55	P2524004	16	55	32	17	27	27, 33, 39		Unit: mm
	SK60-CMA22-55	P2524005	22	55	40	19	31	28, 34, 40		
	SK60-CMA27-55	P2524006	27	55	48	21	33	29, 35, 41		
50	SK60-CMA32-60	P2524007	32	60	58	24	38	30, 36, 42		Unit: mm
	SK60-CMA40-60	P2524008	40	60	70	27	41	31, 37, 43		
	SK60-CMA16-55	P2524009	16	55	32	17	27	27, 33, 39		
50	SK60-CMA22-55	P2524010	22	55	40	19	31	28, 34, 40		Unit: mm
	SK60-CMA27-55	P2524011	27	55	48	21	33	29, 35, 41		
	SK60-CMA32-55	P2524012	32	55	58	24	38	30, 36, 42		
50	SK60-CMA40-55	P2524013	40	55	70	27	41	31, 37, 43		Unit: mm
	SK60-CMA50-70	P2524014	50	70	90	30	46	32, 38, 44		

◆ EXTENDED

TAPER No.	MODEL No.	EDP No.	d	L	D	H1	H	Part No.	WEIGHT (kg)	Unit: mm
40	SK40-CMA16-100	P2524015	16	100	32	17	27	27, 33, 39		Unit: mm
	SK40-CMA22-100	P2524016	22	100	40	19	31	28, 34, 40		
	SK40-CMA27-100	P2524017	27	100	48	21	33	29, 35, 41		
50	SK40-CMA32-100	P2524018	32	100	58	24	38	30, 36, 42		Unit: mm
	SK50-CMA16-100	P2524019	16	100	32	17	27	27, 33, 39		
	SK50-CMA22-100	P2524020	22	100	40	19	31	28, 34, 40		
50	SK50-CMA27-100	P2524021	27	100	48	21	33	29, 35, 41		Unit: mm
	SK50-CMA32-100	P2524022	32	100	58	24	38	30, 36, 42		
	SK50-CMA40-100	P2524023	40	100	70	27	41	31, 37, 43		

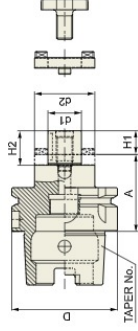
▶ CATIANSI BS.50 taper and inch type products are available.

▶ For parts, please refer to page 137.

SHELL MILL ARBOR

COMBI-SHELL MILL ARBOR

KOMBI-AUFNAHMEFORM FÜR FRÄSER MIT BOHRUNG
MANDRIN PORTÉ-FRAISES COMBINÉS
MANDRINO PORTA FRESE
PORTA FRESAS COMBINADO



DIN 69893-HSK

Taper Accuracy: -

G Value: 6.3

RPM: 15,000

Coolant System: A

■ DIN 69893/ISO 12164-1-HSK FORM A

TAPER No.	MODEL No.	EDP No.	D	d1	d2	A	H1	H2	Part No.	WEIGHT (kg)	Unit: mm
50A	HSK50A-CMA16-50	P2562006	50	16	32	50	17	27	27, 33, 39		Unit: mm
	HSK50A-CMA22-50	P2562007	50	22	40	50	19	31	28, 34, 40		
	HSK50A-CMA27-65	P2562008	50	27	48	65	21	33	29, 35, 41		
63A	HSK63A-CMA32-65	P2562009	50	32	58	65	24	38	30, 36, 42		Unit: mm
	HSK63A-CMA16-60	P2562001	63	16	32	60	17	27	27, 33, 39		
	HSK63A-CMA22-60	P2562002	63	22	40	60	19	31	28, 34, 40		
63A	HSK63A-CMA27-60	P2562003	63	27	48	60	21	33	29, 35, 41		Unit: mm
	HSK63A-CMA32-60	P2562004	63	32	53	60	24	38	30, 36, 42		
	HSK63A-CMA40-70	P2562005	63	40	70	70	27	41	31, 37, 43		
100A	HSK100A-CMA16-60	P2562011	100	16	32	60	17	27	27, 33, 39		Unit: mm
	HSK100A-CMA22-60	P2562012	100	22	40	60	19	31	28, 34, 40		
	HSK100A-CMA27-60	P2562013	100	27	48	60	21	33	29, 35, 41		
100A	HSK100A-CMA32-60	P2562014	100	32	58	60	24	38	30, 36, 42		Unit: mm
	HSK100A-CMA40-70	P2562015	100	40	70	70	27	41	31, 37, 43		
100A	HSK100A-CMA50-80	P2562010	100	50	90	80	30	46	32, 38, 44		Unit: mm

▶ For parts, please refer to page 137.