

**HSK – SK SLIM Prihvati**

### SK SLIM CHUCK

### SK SLIM CHUCK

SK SCHLANK FUTTER  
MANDRIN TYPE SK MINCE  
SK MANDRINI SOTTILI  
PORTA-HERRAMIENTAS SK EJE REDUCIDO



■ DIN 69893/ISO 12164-1-HSK FORM A

TAPER No.	MODEL No.	EDP No.	CLAMPING RANGE	L	D	D1	H	COLLET	WEIGHT (kg)
32A	HSK32A-SKA06-50	P2775860	1.8-6.0	50	20	19.5	31	SKC6	0.50
	HSK32A-SKA10-60	P2775861	1.75-10.0	60	28	26	35	SKC10	0.70
	HSK40A-SKA06-60	P2775862	1.8-6.0	60	20	19.5	31	SKC6	0.70
40A	HSK40A-SKA10-60	P2775863	1.75-10.0	60	28	27.5	35	SKC10	0.90
	HSK40A-SKA13-80	P2775864	2.75-13.0	80	33	33	43.6	SKC13	1.00
	HSK50A-SKA06-80	P2775865	1.8-6.0	80	20	19.5	31	SKC6	0.90
50A	HSK50A-SKA10-100	P2775866	1.75-10.0	100	28	27.5	35	SKC10	1.10
	HSK50A-SKA13-120	P2775867	2.75-13.0	120	33	33	43.6	SKC13	1.20
	HSK63A-SKA06-100	P2775868	1.8-6.0	100	20	19.5	31	SKC6	1.40
63A	HSK63A-SKA10-100	P2775869	1.75-10.0	100	28	27.5	35	SKC10	1.60
	HSK63A-SKA13-100	P2775870	2.75-13.0	100	33	33	43.6	SKC13	1.70
	HSK63A-SKA16-120	P2775871	3.5-20.0	120	40	40	52	SKC16	1.70
80A	HSK80A-SKA06-120	P2775872	1.75-10.0	120	40	40	52	SKC16	2.10
	HSK80A-SKA10-120	P2775873	1.60-25.4	150	55	55	63.4	SKC25	2.40
	HSK80A-SKA13-120	P2775874	1.8-6.0	120	28	27.5	35	SKC10	2.40
100A	HSK100A-SKA10-150	P2775875	1.75-10.0	150	48.5	48.5	59.6	SKC20	4.00
	HSK100A-SKA13-150	P2775876	2.75-13.0	150	55	55	63.4	SKC25	4.50
	HSK100A-SKA16-150	P2775877	3.5-20.0	150	55	55	63.4	SKC25	5.10

■ DIN 69893/ISO 12164-1-HSK FORM E

TAPER No.	MODEL No.	EDP No.	CLAMPING RANGE	L	D	D1	H	COLLET	WEIGHT (kg)
25E	HSK25E-SKA06-45	P2775886	1.8-6.0	45	20	19.5	31	SKC6	0.50
	HSK25E-SKA10-50	P2775887	1.75-10.0	50	28	21.5	35	SKC10	0.50
32E	HSK32E-SKA06-50	P2775888	1.8-6.0	50	20	19.5	31	SKC6	0.70
	HSK32E-SKA10-60	P2775889	1.75-10.0	60	28	26	35	SKC10	0.70
40E	HSK40E-SKA06-60	P2775890	1.8-6.0	60	20	19.5	31	SKC6	0.70
	HSK40E-SKA10-60	P2775891	1.75-10.0	60	28	27.5	35	SKC10	0.90
	HSK40E-SKA13-80	P2775892	2.75-13.0	80	33	33	43.6	SKC13	1.00

► SK(DIN 69871) and CAT(ANSI B5.50) taper products available.  
► For applicable SKC collet, please refer to page 172-173.

### SK SLIM CHUCK

### SK SLIM CHUCK

SK SCHLANK FUTTER  
MANDRIN TYPE SK MINCE  
SK MANDRINI SOTTILI  
PORTA-HERRAMIENTAS SK EJE REDUCIDO



■ DIN 69893/ISO 12164-1-HSK FORM A

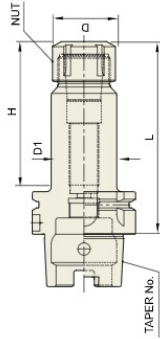
TAPER No.	MODEL No.	EDP No.	CLAMPING RANGE	L	D	D1	H	COLLET	WEIGHT (kg)
32A	HSK32A-SKA06-50	P2773502	1.8-6.0	50	20	19.5	31	SKC6	0.50
	HSK32A-SKA10-60	P2773503	1.75-10.0	60	28	26	35	SKC10	0.70
	HSK40A-SKA06-60	P2773504	1.8-6.0	60	20	19.5	31	SKC6	0.70
40A	HSK40A-SKA10-60	P2773505	1.75-10.0	60	28	27.5	35	SKC10	0.90
	HSK40A-SKA13-80	P2773506	2.75-13.0	80	33	33	43.6	SKC13	1.00
	HSK50A-SKA06-80	P2773507	1.8-6.0	80	20	19.5	31	SKC6	0.90
50A	HSK50A-SKA10-100	P2773508	1.75-10.0	100	28	27.5	35	SKC10	1.10
	HSK50A-SKA13-100	P2773509	2.75-13.0	100	33	33	43.6	SKC13	1.20
	HSK63A-SKA06-100	P2730492	1.8-6.0	100	20	19.5	31	SKC6	1.40
63A	HSK63A-SKA10-100	P2730494	1.75-10.0	100	28	27.5	35	SKC10	1.60
	HSK63A-SKA13-100	P273510	2.75-13.0	100	33	33	43.6	SKC13	1.70
	HSK63A-SKA16-120	P2730510	2.75-16.0	120	40	40	52	SKC16	1.70
80A	HSK80A-SKA06-120	P2730515	3.5-20.0	120	48.5	48.5	59.6	SKC20	2.10
	HSK80A-SKA10-120	P2773501	1.60-25.4	150	55	55	63.4	SKC25	2.40
	HSK80A-SKA13-120	P2773511	1.8-6.0	120	20	19.5	31	SKC6	2.40
100A	HSK100A-SKA10-120	P2773512	1.75-10.0	120	28	27.5	35	SKC10	4.00
	HSK100A-SKA13-120	P2773513	2.75-13.0	120	33	33	43.6	SKC13	4.50
	HSK100A-SKA16-120	P2773514	3.5-20.0	120	40	40	52	SKC16	4.50

► SK(DIN 69871) and CAT(ANSI B5.50) taper products available.  
► For applicable SKC collet, please refer to page 172-173.

## SK SLIM CHUCK

### SK SLIM CHUCK

SK SCHLANK FUTTER  
MANDRIN TYPE SK MINCE  
SK MANDRINI SOTTILI  
PORTA-HERRAMIENTAS SK EJE REDUCIDO



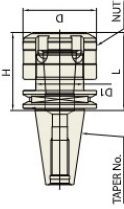
<b>DIN 69893 - HSK</b>	<b>Taper Accuracy</b>	<b>G Value</b>	<b>RPM</b>	<b>Coolant System</b>
	-	6.3	15,000	AD

### ■ DIN 69893/ISO 12164-1-HSK FORM E

TAPER No.	MODEL No.	EDP No.	CLAMPING RANGE	L	D	D1	H	COLLET	WEIGHT (kg)	Unit: mm
2SE	HSK25E-SKA06-45	P2773523	1.8 - 6.0	45	20	19.5	31	SKC6	0.20	Unit: mm
	HSK25E-SKA10-50	P2773524	1.75 - 10.0	50	28	21.5	35	SKC10	0.50	
	HSK32E-SKA06-50	P2773525	1.8 - 6.0	50	20	19.5	31	SKC6	0.50	
3ZE	HSK32E-SKA10-60	P2773526	1.75 - 10.0	60	28	26	35	SKC10	0.70	Unit: mm
	HSK40E-SKA06-60	P2773527	1.8 - 6.0	60	20	19.5	31	SKC6	0.70	
4OE	HSK40E-SKA10-60	P2773528	1.75 - 10.0	60	28	27.5	35	SKC10	0.90	Unit: mm
	HSK40E-SKA13-80	P2773529	2.75 - 13.0	80	33	33	43.6	SKC13	1.00	

► SK(DIN 69871) and CAT(VANSI B5.50) taper products available.  
► For applicable SKC collet, please refer to page 172-173.

## SK SLIM CHUCK NEW



<b>ISO 20/25</b>	<b>Taper Accuracy</b>	<b>G Value</b>	<b>RPM</b>	<b>Coolant System</b>
	AT3	2.5	30,000	AD

### ■ ISO 20/25

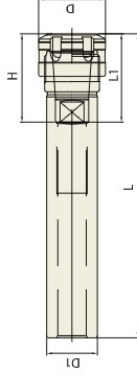
TAPER No.	MODEL No.	EDP No.	CLAMPING RANGE	L	D	D1	H	COLLET	WEIGHT (kg)	Unit: mm
20	ISO20-SKA10-35	P2773530	1.75 - 10.0	35	33	21.5	35	SKC10	0.50	Unit: mm
25	ISO25-SKA10-35	P2773531	1.75 - 10.0	35	33	21.5	35	SKC10	0.70	

► Higher balancing grade is available upon request.  
► To be supplied with assembling of pull stud bolt.

## SK SLIM CHUCK

### SK SLIM CHUCK

SK SCHLANK FUTTER - GERADEAUS SCHAFT  
MANDRIN TYPE SK MINCE - TOUT DROIT TIGE  
SK MANDRINI SOTTILI - TIBIA DIRITTA  
PORTA-HERRAMIENTAS SK EJE REDUCIDO - CANA RECTA



### ■ STRAIGHT-K

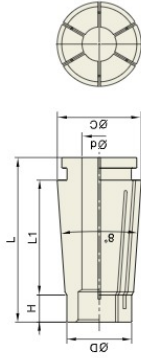
TAPER No.	MODEL No.	EDP No.	CLAMPING RANGE	L	L1	D	D1	H	COLLET	WEIGHT (kg)	Unit: mm
20	K20-SKA06-100	P2773532	1.8 - 6.0	100	21 - 35	20	20	31	SKC6	0.20	Unit: mm
	K20-SKA06-140	P2773533	1.8 - 6.0	140	31 - 35	20	20	31	SKC6	0.30	
	K20-SKA10-100	P2773534	1.75 - 10.0	100	30 - 50	28	20	35	SKC10	0.20	
	K20-SKA10-140	P2773535	1.75 - 10.0	140	30 - 50	28	20	35	SKC10	0.30	
	K25-SKA06-100	P2773536	1.8 - 6.0	100	21 - 35	20	25	31	SKC6	0.30	
	K25-SKA06-140	P2773537	1.8 - 6.0	140	21 - 35	20	25	31	SKC6	0.50	
25	K25-SKA10-100	P2773538	1.75 - 10.0	100	30 - 50	28	25	35	SKC10	0.30	Unit: mm
	K25-SKA10-150	P2773539	1.75 - 10.0	150	30 - 50	28	25	35	SKC10	0.50	
	K25-SKA13-100	P2773540	2.75 - 13.0	100	31 - 65	33	25	43.6	SKC13	0.40	
	K25-SKA13-150	P2773541	2.75 - 13.0	150	31 - 65	33	25	43.6	SKC13	0.60	
	K32-SKA10-100	P2773542	1.75 - 10.0	100	30 - 50	28	32	35	SKC10	0.50	
	K32-SKA10-150	P2773543	1.75 - 10.0	150	30 - 50	28	32	35	SKC10	0.70	
32	K32-SKA13-100	P2773544	2.75 - 13.0	100	31 - 65	33	32	43.6	SKC13	1.00	Unit: mm
	K32-SKA13-150	P2773545	2.75 - 13.0	150	31 - 65	33	32	43.6	SKC13	1.20	
	K32-SKA16-100	P2773546	2.75 - 16.0	100	40 - 70	40	32	52	SKC16	1.00	
	K32-SKA16-150	P2773547	2.75 - 16.0	150	40 - 70	40	32	52	SKC16	1.20	
	K32-SKA20-100	P2773548	3.5 - 20.0	100	47 - 80	48.5	32	59.6	SKC20	1.10	
	K32-SKA20-150	P2773549	3.5 - 20.0	150	47 - 80	48.5	32	59.6	SKC20	1.30	

► For applicable SKC collet, please refer to page 172-173.

SK SLIM CHUCK

SK COLLET

SK SCHLANKER FUTTER SPANNZANGE  
MANDRIN TYPE SK MINCE PINCE DE SERRAGE  
SK MANDRINI SOTTILI PINZA DI SERRAGGIO  
PORTA-HERRAMIENTAS SK EJE REDUCIDO PINZA PORTAPIEZAS



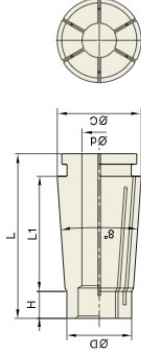
◇ T.I.R. : ≤0.005mm at 3D

SKA

SK SLIM CHUCK

SK COLLET

SK SCHLANKER FUTTER SPANNZANGE  
MANDRIN TYPE SK MINCE PINCE DE SERRAGE  
SK MANDRINI SOTTILI PINZA DI SERRAGGIO  
PORTA-HERRAMIENTAS SK EJE REDUCIDO PINZA PORTAPIEZAS



◇ T.I.R. : ≤0.005mm at 3D

TYPE	MODEL No.	EDP No.	CLAMPING RANGE (d)	TYPE	MODEL No.	EDP No.	CLAMPING RANGE (d)	TYPE	MODEL No.	EDP No.	CLAMPING RANGE (d)	Unit: mm
SKC6	SKC6-2	P2730780	1.8 - 2.0	SKC10	SKC10-2	P2730790	1.75 - 2.0	SKC16	SKC16-3	P2730810	2.75 - 3.0	Unit: mm
	SKC6-2.5	P2730801	2.3 - 2.5		SKC10-2.5	P2730805	2.25 - 2.5		SKC16-3.5	P2730815	3.0 - 3.5	
	SKC6-3	P2730782	2.8 - 3.0		SKC10-3	P2730791	2.75 - 3.0		SKC16-4	P2730812	3.5 - 4.0	
	SKC6-3.5	P2730802	3.0 - 3.5		SKC10-3.5	P2730806	3.0 - 3.5		SKC16-4.5	P2730814	4.0 - 4.5	
	SKC6-4	P2730784	3.5 - 4.0		SKC10-4	P2730792	3.5 - 4.0		SKC16-5	P2730815	4.5 - 5.0	
	SKC6-4.5	P2730803	4.0 - 4.5		SKC10-4.5	P2730807	4.0 - 4.5		SKC16-5.5	P2730816	5.0 - 5.5	
SKC6-5	SKC6-5	P2730786	4.5 - 5.0	SKC10-5	SKC10-5	P2730793	4.5 - 5.0	SKC16-6	SKC16-6	P2730817	5.5 - 6.0	
	SKC6-5.5	P2730804	5.0 - 5.5		SKC10-5.5	P2730808	5.0 - 5.5		SKC16-6.5	P2730817	6.0 - 6.5	
	SKC6-6	P2730788	5.5 - 6.0		SKC10-6	P2730794	5.5 - 6.0		SKC16-7	P2730818	6.5 - 7.0	
					SKC10-6.5	P2730809	6.0 - 6.5		SKC16-7.5	P2730819	7.0 - 7.5	
					SKC10-7	P2730795	6.5 - 7.0		SKC16-8	P2730816	7.5 - 8.0	
					SKC10-7.5	P2730810	7.0 - 7.5		SKC16-8.5	P2730820	8.0 - 8.5	
SKC10	SKC10-8	P2730796	7.5 - 8.0	SKC13	SKC13-3	P2730856	2.75 - 3.0	SKC20	SKC20-4	P2730830	3.5 - 4.0	
	SKC10-8.5	P2730811	8.0 - 8.5		SKC13-3.5	P2730857	3.0 - 3.5		SKC20-4.5	P2730832	4.0 - 4.5	
	SKC10-9	P2730797	8.5 - 9.0		SKC13-4	P2730858	3.5 - 4.0		SKC20-5	P2730833	4.5 - 5.0	
	SKC10-9.5	P2730812	9.0 - 9.5		SKC13-4.5	P2730859	4.0 - 4.5		SKC20-5.5	P2730834	5.0 - 5.5	
	SKC10-10	P2730798	9.5 - 10.0		SKC13-5	P2730860	4.5 - 5.0		SKC20-6	P2730835	5.5 - 6.0	
					SKC13-5.5	P2730861	5.0 - 5.5		SKC20-6.5	P2730836	6.0 - 6.5	
SKC16	SKC16-10	P2730818	9.5 - 10.0	SKC13-6	SKC13-6	P2730862	5.5 - 6.0	SKC20-7	SKC20-7	P2730837	7.0 - 7.5	
	SKC16-11	P2730819	10.0 - 10.5		SKC13-6.5	P2730863	6.0 - 6.5		SKC20-7.5	P2730837	7.0 - 7.5	
	SKC16-11.5	P2730820	10.5 - 11.0		SKC13-7	P2730864	6.5 - 7.0		SKC20-8	P2730834	7.5 - 8.0	
	SKC16-12	P2730821	11.0 - 11.5		SKC13-7.5	P2730865	7.0 - 7.5		SKC20-8.5	P2730838	8.0 - 8.5	
	SKC16-12.5	P2730822	11.5 - 12.0		SKC13-8	P2730866	7.5 - 8.0		SKC20-9	P2730839	8.5 - 9.0	
	SKC16-13	P2730823	12.0 - 12.5		SKC13-8.5	P2730867	8.0 - 8.5		SKC20-9.5	P2730840	9.0 - 9.5	
SKC20	SKC20-10	P2730798	9.5 - 10.0	SKC13-9	SKC13-9	P2730868	8.5 - 9.0	SKC20-10	SKC20-10	P2730836	9.5 - 10.0	
	SKC20-10.5	P2730811	10.0 - 10.5		SKC13-9.5	P2730869	9.0 - 9.5		SKC20-10.5	P2730841	10.0 - 10.5	
	SKC20-11	P2730812	10.5 - 11.0		SKC13-10	P2730870	9.5 - 10.0		SKC20-11	P2730842	10.5 - 11.0	
	SKC20-11.5	P2730813	11.0 - 11.5		SKC13-10.5	P2730871	10.0 - 10.5		SKC20-11.5	P2730843	11.0 - 11.5	
	SKC20-12	P2730814	11.5 - 12.0		SKC13-11	P2730872	10.5 - 11.0		SKC20-12	P2730838	11.5 - 12.0	
	SKC20-12.5	P2730815	12.0 - 12.5		SKC13-11.5	P2730873	11.0 - 11.5		SKC20-12.5	P2730844	12.0 - 12.5	

SK COLLET DIMENSION

TYPE	D	L	L1	H	C	WEIGHT (kg)
SKC6	7.5	25.7	17.6	3.8	10	0.03
SKC10	12	32	21.3	5	15	0.04
SKC13	15.4	39	28.3	5.5	20	0.06
SKC16	18.8	46	32	8	24	0.06
SKC20	22.5	54.2	41	8	29	0.10
SKC25	28.9	58.2	43	8.5	35	0.10