

**SK – ER COLLET Prihvati**

**YG-1 TOOLING SYSTEM**

**ER COLLET  
CHUCK**

- FRÄSERSPANNFUTTER - ER
- MANDRIN À PINCES - ER
- MANDRINO PORTA PINZE - ER
- PORTAPINZAS - ER



DIN 69871 - SK

DIN 69893/ISO 12164-1-HSK

CBT (BT DUAL CONTACT)

JIS B6339/MAS 403-BT

ISO 20/25

DIN 228-MTA/MTB

STRAIGHT-K

NC AND BRIDGEPORT-R8

GOST 25827-93

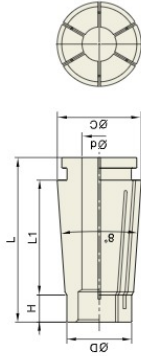
**ACCESSORY & PART**

ER COLLET / TAP ER COLLET / ER NUT & SEALING DISK / SPANNER

## SK SLIM CHUCK

### SK COLLET

SK SCLANKE FUTTER SPANNZANGE  
MANDRIN TYPE SK MINCE PINCE DE SERRAGE  
SK MANDRINI SOTTILI PINZA DI SERRAGGIO  
PORTA-HERRAMIENTAS SK EJE REDUCIDO PINZA PORTAPIEZAS



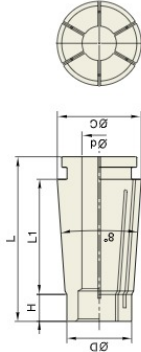
◇ T.I.R. : ≤0.005mm at 3D

### SKA

## SK SLIM CHUCK

### SK COLLET

SK SCLANKE FUTTER SPANNZANGE  
MANDRIN TYPE SK MINCE PINCE DE SERRAGE  
SK MANDRINI SOTTILI PINZA DI SERRAGGIO  
PORTA-HERRAMIENTAS SK EJE REDUCIDO PINZA PORTAPIEZAS



◇ T.I.R. : ≤0.005mm at 3D

TYPE	MODEL No.	EDP No.	CLAMPING RANGE (d)	TYPE	MODEL No.	EDP No.	CLAMPING RANGE (d)	TYPE	MODEL No.	EDP No.	CLAMPING RANGE (d)	Unit: mm			
SKC6	SKC6-2	P2730780	1.8 - 2.0	SKC10	SKC10-2	P2730790	1.75 - 2.0	SKC16	SKC16-3	P2730810	2.75 - 3.0	SKC20			
	SKC6-3	P2730782	2.8 - 3.0		SKC10-3	P2730791	2.75 - 3.0		SKC16-4	P2730812	3.5 - 4.0		SKC20-4	P2730830	3.5 - 4.0
	SKC6-4	P2730784	3.5 - 4.0		SKC10-4	P2730792	3.5 - 4.0		SKC16-5	P2730815	4.5 - 5.0		SKC20-5	P2730832	4.5 - 5.0
	SKC6-5	P2730786	4.5 - 5.0		SKC10-5	P2730793	4.5 - 5.0		SKC16-6	P2730817	5.5 - 6.0		SKC20-6	P2730834	5.5 - 6.0
	SKC6-5.5	P273604	5.0 - 5.5		SKC10-5.5	P273608	5.0 - 5.5		SKC16-6.5	P273617	6.0 - 6.5		SKC20-6.5	P273635	6.0 - 6.5
	SKC6-6	P2730788	5.5 - 6.0		SKC10-6	P2730794	5.5 - 6.0		SKC16-7	P273618	6.5 - 7.0		SKC20-7	P273637	6.5 - 7.0
SKC10	SKC10-6.5	P273609	6.0 - 6.5	SKC13	SKC13-7.5	P273665	7.0 - 7.5	SKC16	SKC16-10	P273618	9.5 - 10.0	SKC20			
	SKC10-7	P2730795	6.5 - 7.0		SKC13-8	P273666	7.5 - 8.0		SKC16-11	P273620	10.0 - 10.5		SKC20-10	P273642	10.0 - 10.5
	SKC10-7.5	P273610	7.0 - 7.5		SKC13-8.5	P273667	8.0 - 8.5		SKC16-11.5	P273622	10.5 - 11.0		SKC20-11	P273644	10.5 - 11.0
	SKC10-8	P2730796	7.5 - 8.0		SKC13-9	P273668	8.5 - 9.0		SKC16-12	P273624	10.5 - 11.0		SKC20-11.5	P273646	11.0 - 11.5
	SKC10-8.5	P273611	8.0 - 8.5		SKC13-9.5	P273669	9.0 - 9.5		SKC16-12.5	P273626	11.0 - 11.5		SKC20-12	P273648	11.5 - 12.0
	SKC10-9	P2730797	8.5 - 9.0		SKC13-10	P273670	9.5 - 10.0		SKC16-13	P273628	11.0 - 11.5		SKC20-12.5	P273650	12.0 - 12.5
	SKC10-9.5	P273612	9.0 - 9.5		SKC13-10.5	P273671	10.0 - 10.5		SKC16-14	P273632	11.5 - 12.0		SKC20-13	P273652	12.5 - 13.0
	SKC10-10	P2730798	9.5 - 10.0		SKC13-11	P273672	10.5 - 11.0		SKC16-14.5	P273634	12.0 - 12.5		SKC20-13.5	P273654	13.0 - 13.5
					SKC13-11.5	P273673	11.0 - 11.5		SKC16-15	P273636	12.5 - 13.0		SKC20-14	P273656	14.0 - 14.5
					SKC13-12	P273674	11.5 - 12.0		SKC16-15.5	P273638	13.0 - 13.5		SKC20-14.5	P273658	14.5 - 15.0
			SKC13-12.5	P273675	12.0 - 12.5	SKC16-16	P273640	13.5 - 14.0	SKC20-15	P273660	15.0 - 15.5				
			SKC13-13	P273676	12.5 - 13.0				SKC20-15.5	P273662	15.5 - 16.0				

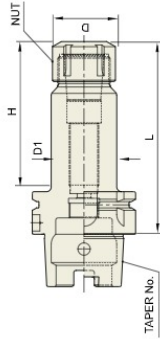
### SK COLLET DIMENSION

TYPE	D	L	L1	H	C	WEIGHT (kg)	Unit: mm
SKC6	7.5	35.7	17.6	3.8	10	0.03	
SKC10	12	32	21.3	5	15	0.04	
SKC13	15.4	39	28.3	5.5	20		
SKC16	18.8	46	32	8	24	0.06	
SKC20	22.5	54.2	41	8	29		
SKC25	28.9	58.2	43	8.5	35	0.10	

SK SLIM CHUCK

SK SLIM CHUCK

SK SCHLANK FUTTER  
MANDRIN TYPE SK MINCE  
SK MANDRINI SOTTILI  
PORTA-HERRAMIENTAS SK EJE REDUCIDO



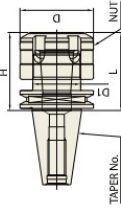
**DIN 69893 - HSK** **Taper Accuracy** **G Value** **RPM** **Coolant System**  
 - **6.3** **15,000** **AD**

■ DIN 69893/ISO 12164-1-HSK FORM E

TAPER No.	MODEL No.	EDP No.	CLAMPING RANGE	L	D	D1	H	COLLET	WEIGHT (kg)
2SE	HSK25E-SKA06-45	P2773523	1.8 - 6.0	45	20	19.5	31	SKC6	0.20
	HSK25E-SKA10-50	P2773524	1.75 - 10.0	50	28	21.5	35	SKC10	0.50
	HSK32E-SKA06-50	P2773525	1.8 - 6.0	50	20	19.5	31	SKC6	0.50
3ZE	HSK32E-SKA10-60	P2773526	1.75 - 10.0	60	28	26	35	SKC10	0.70
	HSK40E-SKA06-60	P2773527	1.8 - 6.0	60	20	19.5	31	SKC6	0.70
4OE	HSK40E-SKA10-80	P2773528	1.75 - 10.0	80	28	27.5	35	SKC10	0.90
	HSK40E-SKA13-80	P2773529	2.75 - 13.0	80	33	33	43.6	SKC13	1.00

► SK(DIN 69871) and CAT(VANSI B5.50) taper products available.  
 ► For applicable SKC collet, please refer to page 172-173.

SK SLIM CHUCK **NEW**



**ISO 20/25** **Taper Accuracy** **G Value** **RPM** **Coolant System**  
**AT3** **2.5** **30,000** **AD**

■ ISO 20/25

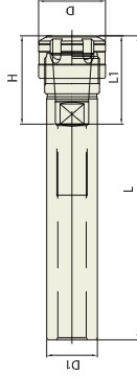
TAPER No.	MODEL No.	EDP No.	CLAMPING RANGE	L	D	D1	H	COLLET	WEIGHT (kg)
20	ISO20-SKA10-35	P2773530	1.75 - 10.0	35	33	21.5	35	SKC10	0.50
25	ISO25-SKA10-35	P2773531	1.75 - 10.0	35	33	21.5	35	SKC10	0.70

► Higher balancing grade is available upon request.  
 ► To be supplied with assembling of pull stud bolt.

SK SLIM CHUCK

SK SLIM CHUCK

SK SCHLANK FUTTER - GERADEAUS SCHAFT  
MANDRIN TYPE SK MINCE - TOUT DROIT TIGE  
SK MANDRINI SOTTILI - TIBIA DIRITTA  
PORTA-HERRAMIENTAS SK EJE REDUCIDO - CANA RECTA



■ STRAIGHT-K

TAPER No.	MODEL No.	EDP No.	CLAMPING RANGE	L	L1	D	D1	H	COLLET	WEIGHT (kg)
20	K20-SKA06-100	P2773532	1.8 - 6.0	100	21 - 35	20	20	31	SKC6	0.20
	K20-SKA06-140	P2773533	1.8 - 6.0	140	31 - 35	20	20	31	SKC6	0.30
	K20-SKA10-100	P2773534	1.75 - 10.0	100	30 - 50	28	20	35	SKC10	0.20
	K20-SKA10-140	P2773535	1.75 - 10.0	140	30 - 50	28	20	35	SKC10	0.30
	K25-SKA06-100	P2773536	1.8 - 6.0	100	21 - 35	20	25	31	SKC6	0.30
	K25-SKA06-140	P2773537	1.8 - 6.0	140	21 - 35	20	25	31	SKC6	0.50
25	K25-SKA10-100	P2773538	1.75 - 10.0	100	30 - 50	28	25	35	SKC10	0.30
	K25-SKA10-150	P2773539	1.75 - 10.0	150	30 - 50	28	25	35	SKC10	0.50
	K25-SKA13-100	P2773540	2.75 - 13.0	100	31 - 65	33	25	43.6	SKC13	0.40
	K25-SKA13-150	P2773541	2.75 - 13.0	150	31 - 65	33	25	43.6	SKC13	0.60
	K32-SKA10-100	P2773542	1.75 - 10.0	100	30 - 50	28	32	35	SKC10	0.50
	K32-SKA10-150	P2773543	1.75 - 10.0	150	30 - 50	28	32	35	SKC10	0.70
32	K32-SKA13-100	P2773544	2.75 - 13.0	100	31 - 65	33	32	43.6	SKC13	1.00
	K32-SKA13-150	P2773545	2.75 - 13.0	150	31 - 65	33	32	43.6	SKC13	1.20
	K32-SKA16-100	P2773546	2.75 - 16.0	100	40 - 70	40	32	52	SKC16	1.00
	K32-SKA16-150	P2773547	2.75 - 16.0	150	40 - 70	40	32	52	SKC16	1.20
	K32-SKA20-100	P2773548	3.5 - 20.0	100	47 - 80	48.5	32	59.6	SKC20	1.10
	K32-SKA20-150	P2773549	3.5 - 20.0	150	47 - 80	48.5	32	59.6	SKC20	1.30

► For applicable SKC collet, please refer to page 172-173.